

**FD-35 Plus****Standard Features:**

Construction painted gray panels.

Big loading door (opening of 180°).

Spark ignition systems.

Front suspension by 2 strong and high-resistant wheel.

Inverter drive system.

Self-cleaning lint screen.

Models available in electric, gas or steam heating.

REVERSE ACTION: All models offer the reverse turning of the drum.

Axial airflow.

COOL DOWN: Anti-wrinkle at the end of cycle.

Optional Features for Plus Models:

Integrated fire extinguishing system (S.A.F.E.).

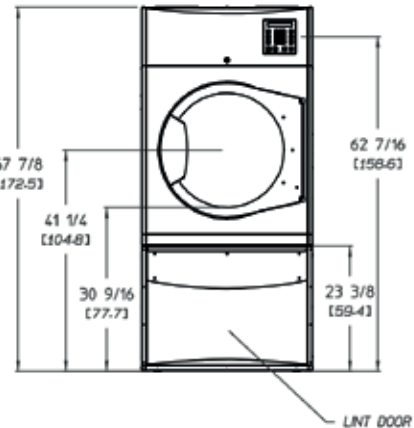
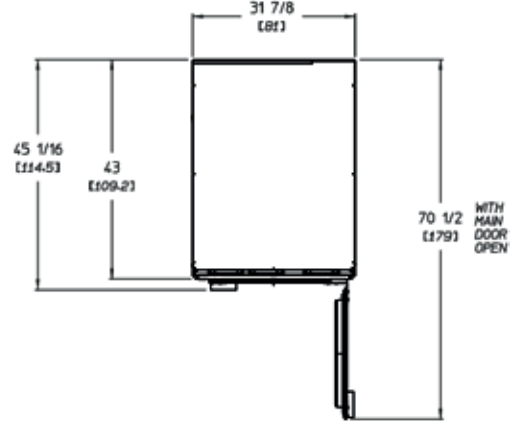
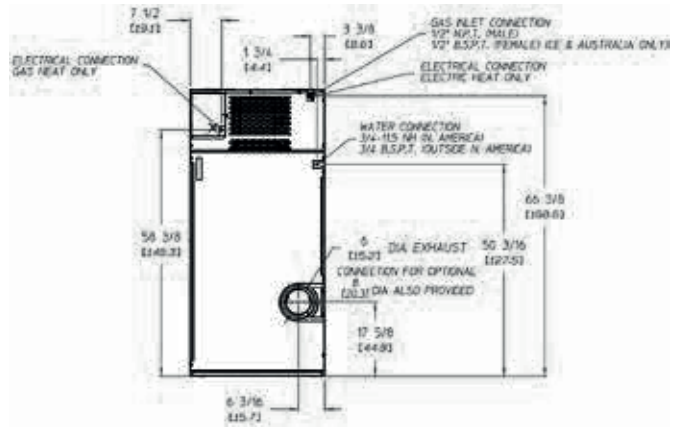
Stainless steel drum.

Double pane glass door.

Stainless steel front panel.

FD-35 Specifications

Maximun Capacity	35 lb	15.87 kg	
Tumble Diameter	30"	76.2 cm	
Tumble Depth	29-3/8"	74.61 cm	
Tumble Volume	12.0 cu.ft	339.80 L	
Tumble/Drive Motor	1 hp	0.75 KW	
Blower/Fan Motor*	1/2 hp	0.37 KW	
Cabinet Width	31-7/8"	80.96 cm	
Cabinet Depth	43"	109.22 cm	
Cabinet Height	67-7/8"	172.40 cm	
Door Opening (Diameter)	21-1/2"	54.61 cm	
Door Sill Height	30-9/16"	77.62 cm	
Water Connection	3/4" - 11.5 NH (North America) 3/4" - B.S.P.T. (Outside North America)		
Dryers per 20"/40" Container	10/22		
Dryers per 48"/53" Container	32/36		
Gas			
Voltage Available	120-480V 1,3ø 2,3w 50/60 Hz		
Approximate Net Weight	552 lb	250.38 kg	
Approximate Shipping Weight	585 lb	322.05 kg	
Airflow	50 Hz 340 cfm 60 Hz 440 cfm	9.63 cmm 12.46 cmm	
Heat Input	70,000 Btu/hr	17,639 Kcal/hr	
Exhaust Connect. (Diameter)	6" / 8"	15.24-20.32 cm	
Intel Pipe Connection	1/2" N.P.T. (Male) 1/2" BSPT (Female)(CE and AustralianOnly)		
Electric			
Voltage Available	120-480V 1,3ø 2,3,4w 50/60 Hz		
Approximate Net Weight	557 lb	252.62 kg	
Approximate Shipping Weight	590 lb	267.62 kg	
Airflow	50 Hz 280 cfm 60 Hz 420 cfm	7.93 cmm 11.89 cmm	
Exhaust Connect. (Diameter)	6" / 8"	15.24-20.32 cm	
Oven Size	KW	Btu/hr	Kcal/hr
	22	75,067	18,917
	20.4	69,608	17,541
	18,5	63,125	15,907



GAS HEAT					
SERVICE VOLTAGES	PHASE	WIRE SERVICE	APPROX AMP DRAW		CIRCUIT BREAKER
			60 Hz	50 Hz	
1201	ø2		10.2-	-1	5
2081	ø2		6.8-	-1	5
2201	ø2		6.66	.6	15
2301	ø2		6.66	.6	15
2401	ø2		6.66	.6	15
2083	ø3		5-	-1	5
2203	ø3		5.43		15
2303	ø3		5.43		15
2403	ø3		5.43		15
3803	ø3		--	2.51	5
4003	ø3		--	2.51	5
4163	ø3		--	2.51	5
4403	ø3		3.1-	-1	5
4603	ø3		3.1-	-1	5
4803	ø3		3.1-	-1	5

ELECTRIC HEAT						
SERVICE VOLTAGE	PHASEK	WIRE SERVICE	W	APPROX AMP DRAW		CIRCUIT BREAKER
				60Hz	50Hz	
SINGLE-PHASE HEAT SINGLE-PHASE MOTOR						
2201	ø2		11.3	58.0	56.08	0
2301	ø2		12.4	60.5	58.58	0
2401	ø2		13.5	62.9	60.98	0
THREE-PHASE HEAT SINGLE-PHASE MOTOR						
2203	ø3		11.3	34.3	34.35	0
2303	ø3		12.4	35.7	35.75	0
2403	ø3		13.5	37.1	37.15	0
3803	ø3		11.3-	-	23.33	0
4003	ø3		12.4-	-	24.03	0
4163	ø3		13.5-	-	24.84	0
THREE-PHASE HEAT THREE-PHASE MOTOR						
2203	ø3		11.33	53	55	0
2303	ø3		12.43	73	65	0
2403	ø3		13.53	83	85	0
3803	ø3		11.3-	-2	13	0
4003	ø3		12.4-	-2	13	0
4163	ø3		13.5-	-2	23	0
4403	ø3		11.31	9-	-3	0
4603	ø3		12.42	0-	-3	0
4803	ø3		13.52	0-	-3	0

**FD-50 Plus****Standard Features:**

Construction painted gray panels.

Big loading door (opening of 180°).

Spark ignition systems.

Front suspension by 2 strong and high-resistant wheel.

Inverter drive system.

Self-cleaning lint screen.

Models available in electric, gas or steam heating.

REVERSE ACTION: All models offer the reverse turning of the drum.

Axial airflow.

COOL DOWN: Anti-wrinkle at the end of cycle.

Optional Features for Plus Models:

Integrated fire extinguishing system (S.A.F.E.).

Stainless steel drum.

Double pane glass door.

Stainless steel front panel.

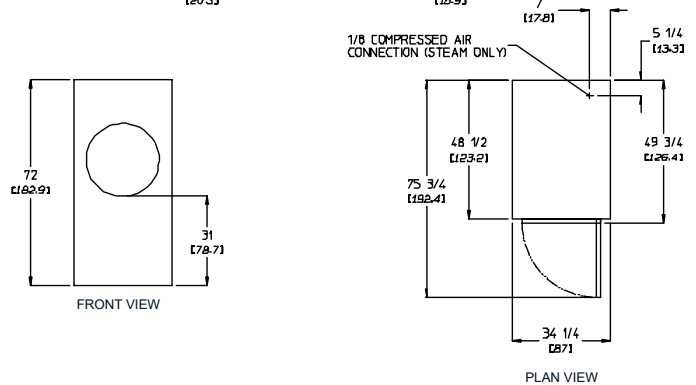
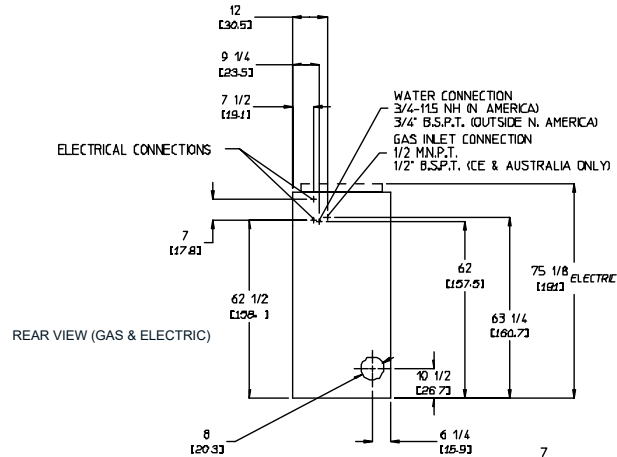
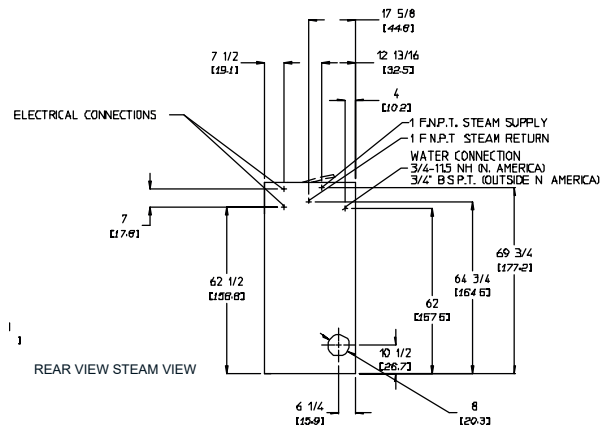
FD-50 Specifications		
Maximun Capacity	50 lb	22.68 kg
Tumble Diameter	32-3/4"	83.19 cm
Tumble Depth	37-1/2"	95.25 cm
Tumble Volume	18.30 cu.ft	518.20 L
Tumble/Drive Motor (non-reversing/reversing)	3/4 hp / 1/2 hp*	0.56 KW / 0.37 KW
Blower/Fan Motor (non-reversing/reversing)	-- / 1/2 hp*	-- / 0.37 KW
Door Opening (Diameter)	21-1/2"	54.61 cm
Door Sill Height	33-1/8"	84.15 cm
S.A.F.E. Water Connection	3/4"-11.5 NH (North America) 3/4" B.S.P.T. (Outside North America)	
Dryers per 20"/40" Container	10/20	
Dryers per 48"/53" Container	24/26	
Width	34-1/4"	87 cm
Depth	49-3/4"	126.4 cm
Height	72"	182.9 cm
Airflow gas/electric/steam	50 Hz	625 cfm
	60 Hz	750 cfm
Exhaust Connection (Diameter)	8"	20.32 cm
Gas		
Approximate Net Weight	651 lb	292.29 kg
Approximate Shipping Weight	700 lb	317.51 kg
Heat Input	150,000 Btu/hr	37,799 Kcal/hr
Inlet Pipe Connection	1/2" M.N.P.T.** 1/2" B.S.P.T. (CE and Australia Only)	
Electric		
Approximate Net Weight	651 lb	295.29 kg
Approximate Shipping Weight	700 lb	317.51 kg
Oven Size	KW	Btu/hr
	20	68,200
	24	81,900
Oven Size	Kcal/hr	
	17,200	
	20,600	
30	102,400	25,800
Steam		
Approximate Net Weight	683 lb	309.80 kg
Approximate Shipping Weight	733 lb	332.48 kg
Steam Consumption	142 lb/hr	64.41 kg/hr
Operation Steam Pressure	125 psi max	8.62 bar
Boiler HP (Normal Load)	4.1 Bhp	
Supply Connection	1" F.N.P.T.**	
Return Connection	1" F.N.P.T.**	

Specifications in parentheses are metric equivalents.

* Reversing dryers use 3-phase (3Ø) motors.

** Size of piping to dryer varies with the installation conditions. Contact factory for assistance.

*** Specify air-operated or electromechanical steam damper system. Air-operated steam damper system must be provided with clean, dry, and regulated 80 psi +/- 10 psi (5.51 bar +/- 0.69 bar) air supply.



Electrical Service Specifications					
SERVICE VOLTAGE	PHASE	WIRE SERVICE	APPROX AMP DRAW		CIRCUIT BREAKER
			60 Hz	50 Hz	
30 kW Electric					
208	3Ø	39	0-	-	125
220	3Ø	38	68	4	125
2303	Ø	37	98	0	100
2403	Ø	37	9-	-	100
3803	Ø	4*	52	51	70
4003	Ø	4*	--	48	60
4163	Ø	4*	--	47	60
4403	Ø	34	2-	-6	0
4603	Ø	34	0-	-5	0
4803	Ø	33	8-	-5	0
5753	Ø	33	2-	-4	0
6003	Ø	33	1-	-4	0
20 kW Electric					
2081	Ø2		103-	-1	50
2201	Ø2		96	--	125
2301	Ø2		93	92	125
2401	Ø2		90	--	125
24 kW Electric					
2083	Ø3		74	--	100
2203	Ø3		70	--	90
2303	Ø3		--	65	80
2403	Ø3		64	--	80
3803	Ø4	*4	34	26	0
416	3Ø	4*	--	38	50
480	3Ø	3	31	--	40

Electrical Service Specifications					
SERVICE VOLTAGE	PHASE	WIRE SERVICE	APPROX AMP DRAW		CIRCUIT BREAKER
			60 Hz	50 Hz	
GAS & STEAM					
1001	Ø2		12.3-	-2	0
1201	Ø2		12.0-	-2	0
2081	Ø2		7.1-	-1	5
2201	Ø2		7.05	.3	15
2301	Ø2	*-	-4	.9	15
240	1Ø	26	.5	4.21	5

Electrical Service Specifications					
SERVICE VOLTAGE	PHASE	WIRE SERVICE	APPROX AMP DRAW		CIRCUIT BREAKER
			60 Hz	50 Hz	
GAS & STEAM					
2083	Ø3		3.0-	-1	5
2203	Ø3		3.8-	-1	5
2303	Ø3		--	3.61	5
2403	Ø3		3.2-	-1	5
3803	Ø4	*-	-2	.2	15
4003	Ø4	*		2.2	15
4163	Ø4	*		2.3	15
4603	Ø	32	.1		15
4803	Ø3		2.1-	-1	5

**FD-80 Plus****Standard Features:**

Construction painted gray panels.

Big loading door (opening of 180°).

Spark ignition systems.

Front suspension by 2 strong and high-resistant wheel.

Inverter drive system.

Self-cleaning lint screen.

Models available in electric, gas or steam heating.

REVERSE ACTION: All models offer the reverse turning of the drum.

Axial airflow.

COOL DOWN: Anti-wrinkle at the end of cycle.

Optional Features for Plus Models:

Integrated fire extinguishing system (S.A.F.E.).

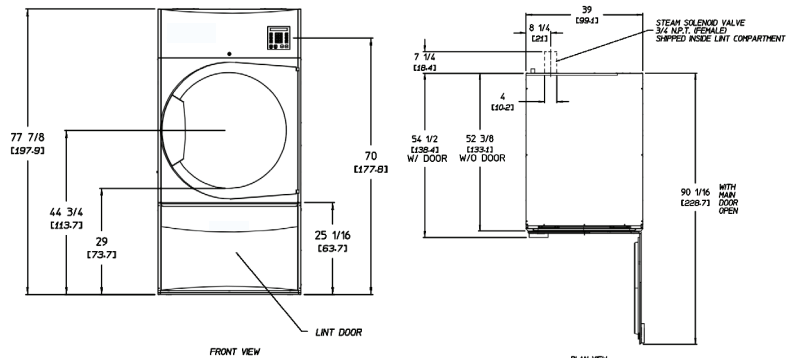
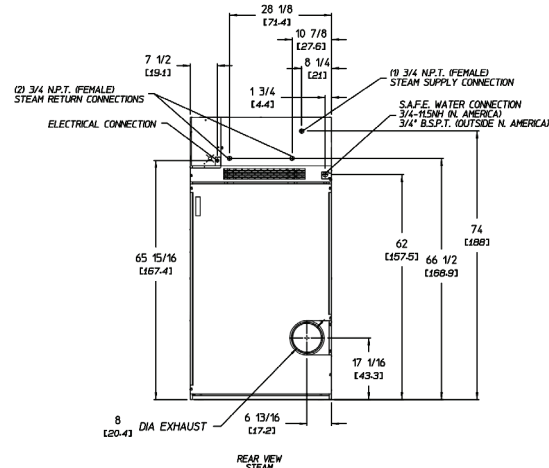
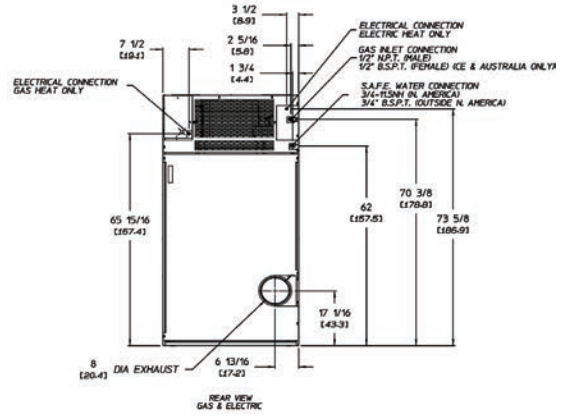
Stainless steel drum.

Double pane glass door.

Stainless steel front panel.

FD-80 Specifications

Maximun Capacity	80 lb	36.28 kg
Tumble Diameter	37"	93.98 cm
Tumble Depth	35-7/16"	90.01 cm
Tumble Volume	22.05 cu.ft	624.39 L
Tumble/Drive Motor	1 hp	0.74 KW
Blower/Fan Motor*	3/4 hp	0.56 KW
Cabinet Width	39"	99.06 cm
Cabinet Depth	52-3/8"	133.03 cm
Cabinet Height	77-7/8"	79.69 cm
Door Opening (Diameter)	31-3/8"	90.01 cm
Door Sill Height	29"	73.66 cm
Water Connection	3/4" - 11.5 NH (North America) 3/4" - B.S.P.T (Outside North America)	
Dryers per 20"/40" Container	8/16	
Dryers per 48"/53" Container	22/26	
Gas		
Voltage Available	120-480V 1,3ø 2,3w 50/60 Hz	
Approximate Net Weight	700 lb	317.52 kg
Approximate Shipping Weight	720 lb	317.52 kg
Airflow	50 Hz 880 cfm	24.91 cmm
	60 Hz 920 cfm	26.05 cmm
Heat Input	135,000 Btu/hr	34,000 Kcal/hr
Exhaust Connect. (Diameter)	8"	20.32 cm
Intel Pipe Connection	1/2" N.P.T. (Male) 1/2" BSPT (Female)(CEand AustralianOnly)	
Electric		
Voltage Available	280-480V 1,3ø 2,3,4w 50/60 Hz	
Approximate Net Weight	710 lb	322.05 kg
Approximate Shipping Weight	730 lb	21.80 kg
Airflow	50 Hz 770 cfm	21.80 cmm
	60 Hz 740 cfm	20.95 cmm
Exhaust Connect. (Diameter)	8"	20.32 cm
Oven Size	KW	Btu/hr Kcal/hr
	22	75,067 18,917
	20.4	69,608 17,541
18,5	63,125 15,907	
Steam		
Voltage Available	280-480V 1,3ø 2,3w 50/60 Hz	
Approximate Net Weight	830 lb	376.48 kg
Approximate Shipping Weight	865 lb	392.36 kg
Airflow	50 Hz 854 cfm	24.18 cmm
	60 Hz 1,025 cfm	29.02 cmm
Steam Consumption (Max)	140 lb/hr	63.50 kg/hr
Operating Steam Preasure	150 psi	10.34 bar
Exhaust Connect. (Diameter)	8"	20.32 cm
Boiler HP (Normal Load)	3.6 Bhp	
Supply Connection	(1) 3/4" N.P.T. (Female)	
Return Connection	(2) 3/4" N.P.T. (Male)	



Electrical Service Specifications					
GAS & STEAM HEAT					
SERVICE VOLTAGE	PHASE	WIRE SERVICE	APPROX AMP DRAW		CIRCUIT BREAKER
			60 Hz	50 Hz	
120	1ø	2	9.8	--	15
208	1ø	2	10	--	15
220	1ø	2	5	5	15
230	1ø	2	5	5	15
240	1ø	2	5	5	15
208	3ø	3	4.45	--	15
220	3ø	3	8.35	4.45	15
230	3ø	3	8.35	4.45	15
240	3ø	3	8.35	4.45	15
380	3ø	3	--	2.73	15
400	3ø	3	--	2.73	15
416	3ø	3	--	2.73	15
440	3ø	3	4.53	--	15
460	3ø	3	4.53	--	15
480	3ø	3	4.53	--	15

Electrical Service Specifications						
ELECTRIC HEAT						
SERVICE VOLTAGE	PHASE	WIRE SERVICE	KW	APPROX AMP DRAW		CIRCUIT BREAKER
				60 Hz	50 Hz	
SINGLE-PHASE HEAT SINGLE-PHASE MOTOR						
208	1ø	2	22	116.1	--	150
220	1ø	2	18.5	94.0	89.0	125
230	1ø	2	20.4	98.6	93.6	125
240	1ø	2	22	101.7	93.6	150
THREE-PHASE HEAT SINGLE-PHASE MOTOR						
208	3ø	3	22	71.4	--	90
220	3ø	3	18.5	58.5	53.4	70
230	3ø	3	20.4	62.2	56.1	80
240	3ø	3	22	63	57.8	80
380	3ø	3	18.5	--	34.7	50
400	3ø	3	20.4	--	36.1	50
416	3ø	3	22	--	37.2	50
THREE-PHASE HEAT THREE-PHASE MOTOR						
208	3ø	3	22	69	--	90
220	3ø	3	18.5	57	55	80
230	3ø	3	20.4	60	58	80
240	3ø	3	22	61	59	80
380	3ø	3	18.5	--	33	50
400	3ø	3	20.4	--	34	50
416	3ø	3	22	--	35	50
460	3ø	3	20.4	30	--	40
480	3ø	3	22	31	--	40

**FD-120 Plus****Standard Features:**

Construction painted gray panels.

Big loading door (opening of 180°).

Spark ignition systems.

Front suspension by 2 strong and high-resistant wheel.

Inverter drive system.

Self-cleaning lint screen.

Models available in electric, gas or steam heating.

REVERSE ACTION: All models offer the reverse turning of the drum.

Axial airflow.

COOL DOWN: Anti-wrinkle at the end of cycle.

Optional Features for Plus Models:

Integrated fire extinguishing system (S.A.F.E.).

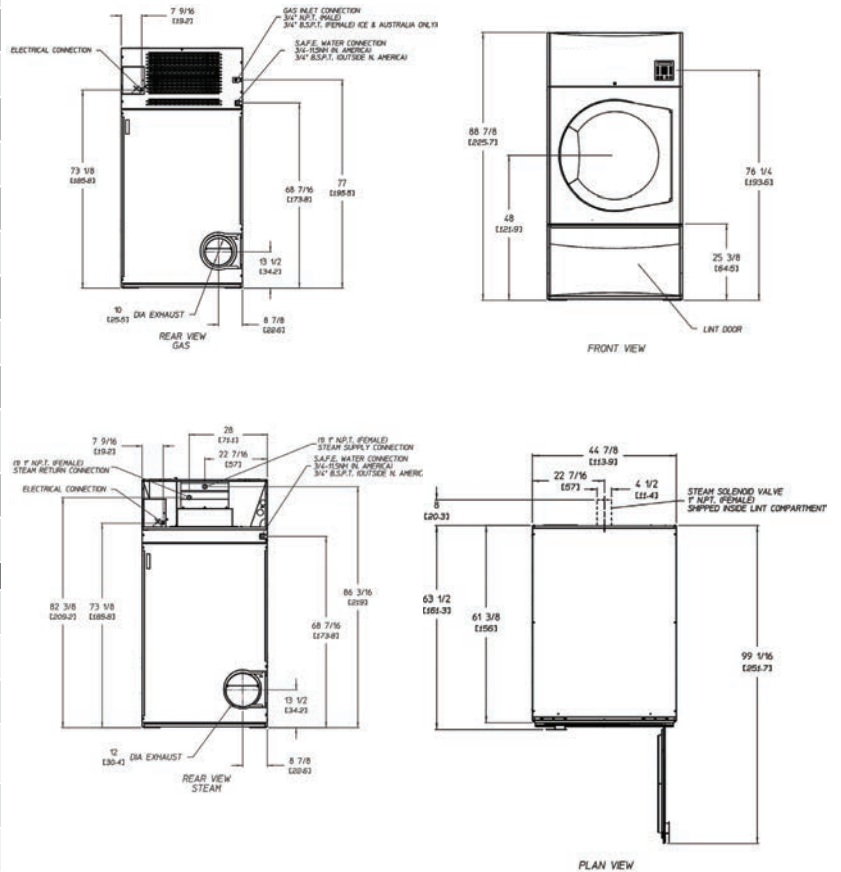
Stainless steel drum.

Double pane glass door.

Stainless steel front panel.

FD-120 Specifications

Maximun Capacity	120 lb	54.43 kg
Tumble Diameter	42"	106.68 cm
Tumble Depth	44-1/4"	112.39 cm
Tumble Volume	35.5 cu.ft	1,005.25 L
Tumble/Drive Motor	2 hp	1.49 KW
Blower/Fan Motor (Gas/Steam)	1 hp / 3 hp	0.75 / 2.24 KW
Cabinet Width	44-7/8"	113.98 cm
Cabinet Depth	61-3/8"	155.89 cm
Cabinet Height	88-7/8"	225.74 cm
Door Opening (Diameter)	31-3/8"	79.69 cm
Door Sill Height	32-1/4"	81.91 cm
Water Connection	3/4" - 11.5 NH (North America) 3/4" - B.S.P.T (Outside North America)	
Dryers per 20"/40" Container	4/9	
Dryers per 48"/53" Container	10/12	
Gas		
Voltage Available	120-480V 1,3ø 2,3w 50/60 Hz	
Approximate Net Weight	1,440 lb	653.17 kg
Approximate Shipping Weight	1,500 lb	680.39 kg
Airflow	50 Hz 60 Hz	1,350 cfm 38.23 cmm
Heat Input	250,000 Btu/hr	62,998 Kcal/hr
Exhaust Connect. (Diameter)	10"	25.4 cm
Intel Pipe Connection	3/4" N.P.T. (Male) 3/4" BSPT (Female)(CEand AustralianOnly)	
Electric		
Voltage Available	208-480V 3ø 2,3,4w 50/60 Hz	
Approximate Net Weight	1,440 lb	653.17 kg
Approximate Shipping Weight	1,500 lb	680.39 kg
Airflow	50 Hz 60 Hz	1,440 cfm 40.77 cmm
Exhaust Connect. (Diameter)	10"	25.4 cm
Oven Size	KW	Btu/hr Kcal/hr
	44	150,134 37,834
	37	126,250 31,814
	40.8	139,612 35,082
Steam		
Voltage Available	208-480V 1,3ø 2,3w 50/60 Hz	
Approximate Net Weight	1,540 lb	698.53 kg
Approximate Shipping Weight	1,600 lb	725.75 kg
Airflow	50 Hz 60 Hz	1,750 cfm 49.55 cmm
Steam Comsumption (Max)	178 lb/hr	80.74 kg/hr
Operating Steam Preasure	125 psi max	8.62 bar
Exhaust Connect. (Diameter)	12"	30.48 cm
Boiler HP (Normal Load)	4.8 Bhp	
Supply Connection	(1) 1" N.P.T. (Female)	
Return Connection	(1) 1" N.P.T. (Male)	



ELECTRICAL SERVICE SPECIFICATIONS (PER POCKET)

Serv. Voltage	Phase	Wire Serv.	Approx. AMP Draw		Circuit Breaker
			60±	50±	
*120	1ø	2	128	—	20
208	1ø	2	128	—	20
220	1ø	2	10	10	15
230	1ø	2	10	10	15
240	1ø	2	10	10	15
208	3ø	3	10	—	15
220	3ø	3	10	—	15
230	3ø	3	10	—	15
240	3ø	3	10	—	15
440	3ø	3	628	—	15
460	3ø	3	628	—	15
480	3ø	3	628	—	15
<small>*Gas only</small>			—	—	15

ELECTRICAL SERVICE SPECIFICATIONS (PER POCKET)

IMPORTANT: 208 VAC & 230/240 VAC ARE NOT THE SAME (When ordering, specify exact voltage)
NOTES:
A. When fuses are used, they must be dual element, time delay, current limiting, class RK1 or RK5 ONLY. Calculate / determine correct fuse value, by applying either local and/or National Electrical Code/stand listed appliance amp draw data.
B. Circuits breaker are thermal-magnetic (industrial) motor curve type ONLY. For other calculate / verify correct breaker size according to appliance amp draw rating and type of braker used.
C. Circuit breaker for 3-phase (3ø) dryers must be 3-pde type.