

**FED-50****Standard Features:**

- 50- lb Capacity
- 150,000 Btu/hr heat input, 750 cfm airflow
- Radial airflow
- Self-diagnostic microprocessor
- Easy-to-clean lint filter
- Fit through standard 36" door
- Available in gas, steam and electric heat

**Optional Features:**

- S.A.F.E. (Sensor Activated Fire Extinguishing System)

**Why Purchase FED-50?****A Design Built to Last**

The bearings are permanently lubricated on the motor and drive system. There are no chain used; rather, a V-belts and pulleys is used for smooth, quiet operation.

**Steel Door With Gasketless Door Glass**

The doors is one solid piece of steel with gasketless glass. This type of construction eliminates the wear and tear on rubber gaskets.

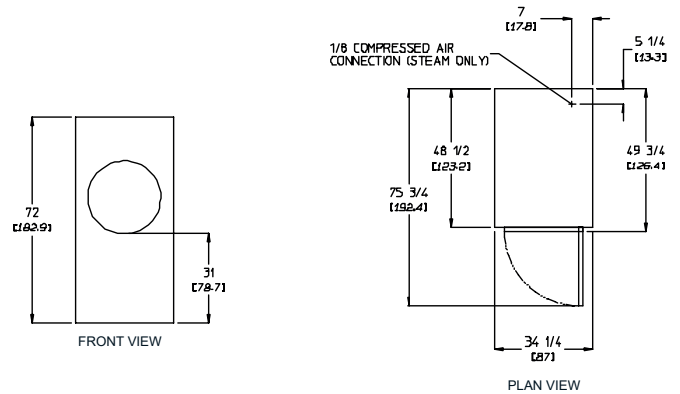
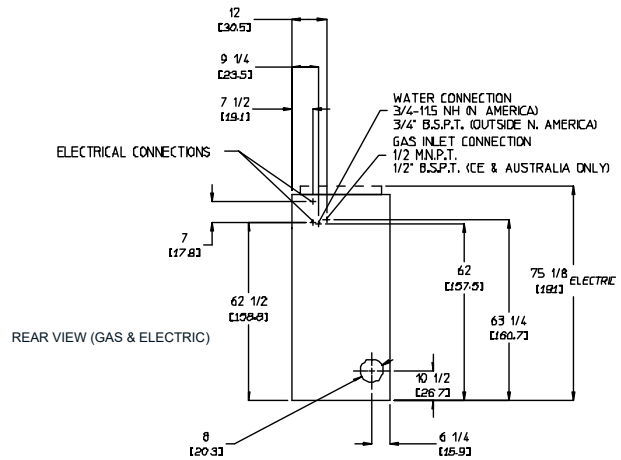
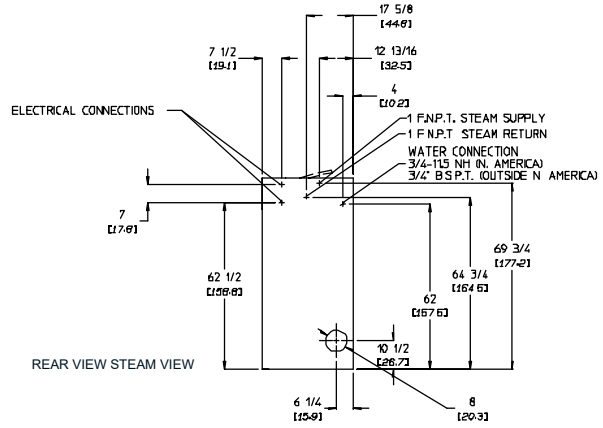
**Multilingual Control Microprocessor**

A design, easy-to-read LED screens and our user friendly multilingual interface positions our dryers as one of the leaders in the laundry industry.



## FED-50 Specifications

Tumbler Capacity (dry weight)	50 lb	22.68 kg	
Tumble Diameter	32-3/4"	83.19 cm	
Tumble Depth	37-1/2"	95.25 cm	
Tumble Volume	18.30 cu.ft	518.20 L	
Tumble/Drive Motor (non-reversing/reversing)*	3/4 hp / 1/2 hp*	0.56/0.37 Kw	
Blower/Fan Motor (non-reversing/reversing)	-- / 1/2 hp*	--/0.37 KW	
Door Opening (Diameter)	21-1/2"	54.61 cm	
Door Sill Height	33-1/8"	84.15 cm	
S.A.F.E. Water Connection	3/4" - 11.5 NH (North America) 3/4" - B.S.P.T (Outside North America)		
Width	34-1/4"	87 cm	
Depth	49-3/4"	126.4 cm	
Height	72"	182.9 cm	
Dryers per 20'/40' Container	10/20		
Dryers per 48'/53' Container	24/26		
Airflow gas/electri/steam	50 Hz	750 cfm	21.24 cmm
	60 Hz	625 cfm	17.70 cmm
Exhaust Connection (Diameter)	8"	20.32 cm	
<b>Gas Model</b>			
Approximate Net Weight	651 lb	295.29 kg	
Approximate Shipping Weight	700 lb	317.51 kg	
Heat Input	150,000 Btu/hr	37,799 kcal/hr	
Inlet Pipe Connection	1/2" M.N.P.T.** 1/2" B.S.P.T. (CE and Australia Only)		
<b>Electrical Model</b>			
Approximate Net Weight	651 lb	295.29 kg	
Approximate Shipping Weight	700 lb	317.51 kg	
Oven Size	KW	Btu/hr	Kcal/hr
	20	68,200	17,200
	24	81,900	20,600
	30	102,400	25,800
<b>Steam Model ***</b>			
Approximate Net Weight	683 lb	309.80 kg	
Approximate Shipping Weight	733 lb	332.48 kg	
Steam Consumption	142 lb/hr	64.41 kg/hr	
Operating Steam Pressure	125 psi max	8.62 bar	
Boiler Horsepower (Normal Load)	4.1 Bhp		
Supply Connection	1" F.N.P.T. **		
Return Connection	1" F.N.P.T. **		



Specifications in parentheses are metric equivalents.

\* Reversing dryers use 3-phase (3ø) motors.

\*\* Size of piping to dryer varies with installation conditions. Contact factory for assistance.

\*\*\* Specify air-operated or electromechanical steam damper system. Air-operated steam damper system must be provided with clean, dry, and regulated 80 psi +/- 10 psi (5.51 bar +/- 0.69 bar) air supply.

Electrical Service Specifications					Electrical Service Specifications					Electrical Service Specifications														
SERVICE VOLTAGE	PHASE	WIRE SERVICE	APPROX AMP DRAW		CIRCUIT BREAKER	SERVICE VOLTAGE	PHASE	WIRE SERVICE	APPROX AMP DRAW		CIRCUIT BREAKER	SERVICE VOLTAGE	PHASE	WIRE SERVICE	APPROX AMP DRAW		CIRCUIT BREAKER							
			60 Hz	50 Hz					60 Hz	50 Hz					60 Hz	50 Hz		60 Hz	50 Hz					
<b>GAS &amp; STEAM</b>					<b>GAS &amp; STEAM</b>					<b>30 kW Electric</b>					<b>20 kW Electric</b>									
1001	ø2		12.3-	-2	0	2083	ø3		3.0-	-1	5	208	3ø	39	0-	-	125	2081	ø2		103-	-1	50	
1201	ø2		12.0-	-2	0	2203	ø3		3.8-	-1	5	220	3ø	38	68	4	125	2201	ø2		96	--	125	
2081	ø2		7.1-	-1	5	2303	ø3		--	3.61	5	2303	ø	37	98	0	100	2301	ø2		93	92	125	
2201	ø2		7.05	.3	15	2403	ø3		3.2-	-1	5	2403	ø	37	9-	-	100	2401	ø2		90	--	125	
2301	ø2	*	-4	.9	15	3803	ø4	*	-2	.2	15	3803	ø	4*	--	48	60	<b>24 kW Electric</b>						
240	1ø	26	.5	4.21	5	4163	ø4	*		2.3	15	4163	ø	4*	--	47	60	2083	ø3		74	--	100	
						4003	ø4	*		2.2	15	4603	ø	34	2-	-6	0	2203	ø3		70	--	90	
						4163	ø4	*		2.3	15	4803	ø	34	0-	-5	0	2303	ø3		--	--	65	80
						4603	ø	32	.1		15	4803	ø	33	8-	-5	0	2403	ø3		64	--	80	
						4803	ø3		2.1-	-1	5	4603	ø	34	0-	-5	0	3803	ø4	14	34	26	0	
												4803	ø	33	8-	-5	0	416	3ø	4*	--	--	38	50
												5753	ø	33	2-	-4	0	480	3ø	3	31	--	40	
												6003	ø	33	1-	-4	0							

**FED-75****Standard Features:**

- 75- lb Capacity
- 175,000 Btu/hr heat input, 1,000 cfm airflow
- Radial airflow
- Self-diagnostic microprocessor
- Easy-to-clean lint filter
- 21.50 cu.ft. basket volume
- Available in gas, steam and electric heat

**Optional Features:**

- S.A.F.E. (Sensor Activated Fire Extinguishing System)

**Why Purchase FED-75?****A Design Built to Last**

The bearings are permanently lubricated on the motor and drive system. There are no chain used; rather, a V-belts and pulleys is used for smooth, quiet operation.

**Steel Door With Gasketless Door Glass**

The doors is one solid piece of steel with gasketless glass. This type of construction eliminates the wear and tear on rubber gaskets.

**Multilingual Control Microprocessor**

A design, easy-to-read LED screens and our user friendly multilingual interface positions our dryers as one of the leaders in the laundry industry.



## FED-75 Specifications

Tumbler Capacity (dry weight)	75 lb	34.02 kg
Tumble Diameter	36-1/4"	92.08 cm
Tumble Depth	36"	91.44 cm
Tumble Volume	21.50 cu.ft	608.81 L
Tumble/Drive Motor	1 hp / 1/2 hp	0.75/0.37 Kw*
Blower/Fan Motor	-- / 1 hp*	--/0.75 KW
Door Opening (Diameter)	31-3/8"	79.69 cm
Door Sill Height	28"	71.12 cm
S.A.F.E. Water Connection	3/4" - 11.5 NH (North America) 3/4" - B.S.P.T (Outside North America)	
Dryers per 20'/40' Container	10/20	
Dryers per 48'/53' Container	24/26	

### Gas Model

Voltage Available	120-575V 1,3ø 2,3,4w 50/60Hz	
Approximate Net Weight	721 lb	327.04 kg
Approximate Shipping Weight	773 lb	350.63 kg
Airflow	60 Hz 1,000 cfm	28.32 cmm
	50 Hz 833 cfm	23.60 cmm
Heat Input	175,000 Btu/hr	44,099 kcal/hr
Exhaust Connection (Diameter)	8"	20.32 cm
Compressed Air Connection	N/A	
Compressed Air Volume	N/A	
Inlet Pipe Connection	3/4" M.N.P.T. 3/4" F.B.S.P.T. (CE and Australia Only)	

### Electrical Model

Voltage Available	208-575V 1,3ø 2,3,4w 50/60Hz	
Approximate Net Weight	721 lb	327.04 kg
Approximate Shipping Weight	773 lb	350.63 kg
Airflow	60 Hz 1,000 cfm	28.32 cmm
	50 Hz 833 cfm	23.60 cmm
Exhaust Connection (Diameter)	8"	20.32 cm
Compressed Air Connection	N/A	
Compressed Air Volume	N/A	
Oven Size	KW	Btu/hr
	30	120,400
		Kcal/hr
		25,800

### Steam Model

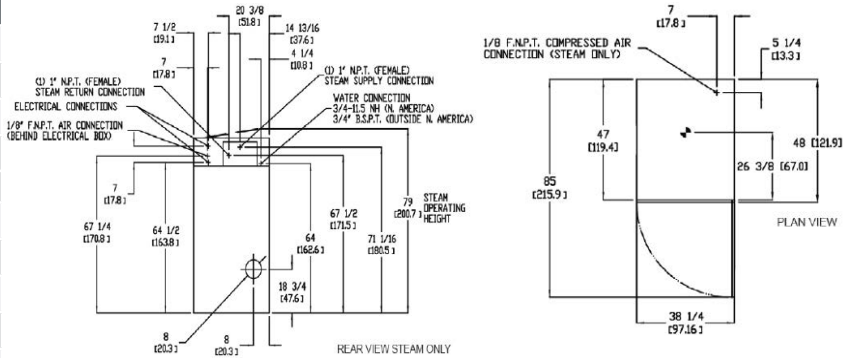
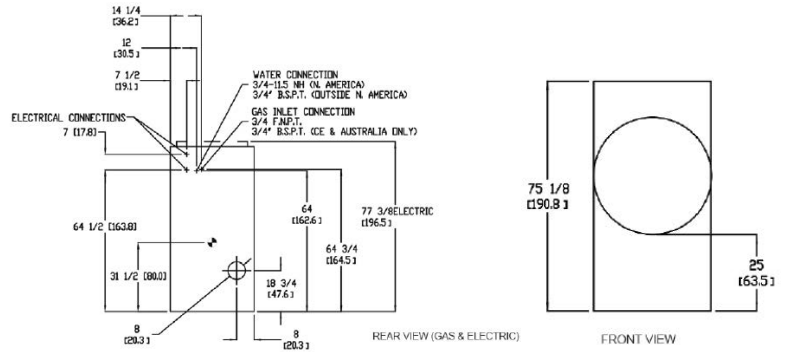
Voltage Available	120-575V 1,3ø 2,3,4w 50/60Hz	
Approximate Net Weight	816 lb	370.13 kg
Approximate Shipping Weight	868 lb	393.72 kg
Airflow	60 Hz 1,200 cfm	33.98 cmm
	50 Hz 1,000 cfm	28.32 cmm
Steam Consumption	275 lb/hr	124.7 kg/hr
Operating Steam Pressure	125 psi max (8.62 bar, 862 kPa)	
Exhaust Connection (Diameter)	8"	20.32 cm
Compressed Air Connection**	1/8" F.N.P.T.	
Compressed Air Volume**	0.75 cfh (0.02 cmh)	
Boiler HP (Normal Load)	7.2 Bhp	
Standard Supply Connections †	(1) 1-1/4" N.P.T.	
Standard Return Connections †	(1) 1" N.P.T.	

Specifications in parentheses are metric equivalents.

\* Reversing dryers use 3-phase (3ø) motors.

\*\* Air-operated steam damper system requires a clean, dry, and regulated 80 psi +/- 10 psi (5.51 bar +/- 0.69 bar) air supply.

† Optional steam coil connections differ. Refer to installation manual.



Electrical Service Specifications					
SERVICE VOLTAGE	PHASE	WIRE SERVICE	APPROX AMP DRAW		CIRCUIT BREAKER
			60 Hz	50 Hz	
GAS & STEAM					
120	1ø	2	13.0	--	20
208	1ø	2	7.6	--	15
220	1ø	2	7.3	8.6	15 15
230	1ø	2	--	8.0	15
240	1ø	2	7.0	8.0	15 15
GAS & STEAM					
208	3ø	3	4.7	--	15
220	3ø	3	4.8	4.8	15 15
230	3ø	3	--	4.7	15
240	3ø	3	4.9	5.4	15 15
380	3ø	4 or 3	2.9	3.1	15 15
400	3ø	4 or 3	--	3.2	15 15
416	3ø	4 or 3	--	3.1	15 15
440	3ø	4*	2.6	--	15
460	3ø	3	2.8	--	15
480	3ø	3	2.8	--	15

Electrical Service Specifications						
SERVICE VOLTAGE	PHASE	WIRE SERVICE	Hz	kW	APPROX AMP DRAW	
					CIRCUIT BREAKER	CIRCUIT BREAKER
Single-Phase Heat Single-Phase Motor						
208	1ø	2	60	24	123	175
			60	30	152	200
220	1ø	2	60	20	98	125
			60	26	125	175
			50	20	100	50
			50	26	127	175
230	1ø	2	60	22	97	125
			60	28	123	175
			50	22	104	150
			50	28	130	175
240	1ø	2	60	24	107	150
			60	30	132	175
			50	24	108	150
			50	30	133	175

Electrical Service Specifications						
SERVICE VOLTAGE	PHASE	WIRE SERVICE	Hz	kW	APPROX AMP DRAW	
					CIRCUIT BREAKER	CIRCUIT BREAKER
Three-Phase Heat Single-Phase Motor						
208	3ø	3	60	24	74	100
			60	30	91	125
220	3ø	3	60	20	60	80
			60	30	86	25
			60	26	76	100
			50	20	61	80
230	3ø	3	50	26	77	100
			60	22	56	80
			60	28	71	100
			50	22	63	80
240	3ø	3	50	28	78	100
			60	24	65	90
			60	30	79	100
			50	24	66	90
380	3ø	4	50	20	39	50
			50	26	48	70
400	3ø	4	50	22	40	60
			50	28	48	70
416	3ø	4	60	30	49	70
			50	24	41	60
			50	30	50	70

Electrical Service Specifications						
SERVICE VOLTAGE	PHASE	WIRE SERVICE	Hz	kW	APPROX AMP DRAW	
					CIRCUIT BREAKER	CIRCUIT BREAKER
Three-Phase Heat Three-Phase Motor						
208	3ø	3	60	24	71	90
			60	30	88	125
220	3ø	3	60	20	57	80
			60	26	73	100
			50	20	57	80
			50	26	73	100
230	3ø	3	60	22	0	0
			60	28	0	0
			50	22	60	80
			50	28	75	100
240	3ø	3	60	24	63	80
			60	30	77	100
			50	24	63	80
			50	30	78	100
380	3ø	3	60	20	33	50
			60	26	42	60
			50	20	33	50
			50	26	43	60
400	3ø	4 or 3	50	22	35	50
			50	20	44	60
			50	24	36	50
			50	30	45	60
416	3ø	4 or 3	60	20	29	40
			60	26	37	50
			50	20	37	50
			50	22	30	40
460	3ø	3	60	28	38	50
			60	24	32	50
			60	30	39	50
			60	24	0	0
575	3ø	3	60	24	0	0
			60	30	0	0

**FED-170****Standard Features:**

- 170- lb Capacity
- 550,000 Btu/hr heat input, 3,700 cfm airflow
- Radial airflow
- Self-diagnostic microprocessor
- Easy-to-clean lint filter
- 51.20 cu.ft. basket volume
- Available in gas, steam and electric heat

**Optional Features:**

- S.A.F.E. (Sensor Activated Fire Extinguishing System)

**Why Purchase FED-170?****A Design Built to Last**

The bearings are permanently lubricated on the motor and drive system. There are no chain used; rather, a V-belts and pulleys is used for smooth, quiet operation.

**Steel Door With Gasketless Door Glass**

The doors is one solid piece of steel with gasketless glass. This type of construction eliminates the wear and tear on rubber gaskets.

**Multilingual Control Microprocessor**

A design, easy-to-read LED screens and our user friendly multilingual interface positions our dryers as one of the leaders in the laundry industry.



## FED-170 Specifications

Tumbler Capacity (dry weight)	170 lb	77.11 kg
Tumble Diameter	51-1/2"	130.81 cm
Tumble Depth	42-1/2"	107.95 cm
Tumble Volume	51.20 cu.ft	1,449.82 L
Tumble/Drive Motor	1 hp	0.75 Kw
Blower/Fan Motor	7-1/2 hp	5.59 KW
Door Opening (Diameter)	31-3/8"	79.69 cm
Door Sill Height	33-3/8"	84.77 cm
S.A.F.E. Water Connection	3/4" - 11.5 NH (North America) 3/4" - B.S.P.T (Outside North America)	
Dryers per 20'/40' Container	3/7	
Dryers per 48'/53' Container	8/9	
Width	55-7/8"	149.5 cm
Depth	62-1/2"	158.7 cm

### Gas Model

Voltage Available	208-575V 3ø 3,4w 50/60Hz	
Approximate Net Weight	2,103 lb	953.90 kg
Approximate Shipping Weight	2,269	1,029.20 kg
Airflow	60 Hz	3,700 cfm 104.77 cmm
	50 Hz	3,700 cfm 104.77 cmm
Heat Input	550,000 Btu/hr	138,598kcal/hr
Exhaust Connection (Diameter)	18"	45.72 cm
Compressed Air Connection	1/4" Quick Connection	
Compressed Air Volume	4.25 cfh (0.12 cmh)	
Inlet Pipe Connection	1-1/2" M.N.P.T. 1-1/2" F.B.S.P.T. (CE and Australia Only)	

### Electrical Model

Voltage Available	380-480V 3ø 3,4w 50/60Hz		
Approximate Net Weight	2,103 lb	953.90 kg	
Approximate Shipping Weight	2,269 lb	1,029.20 kg	
Airflow	60 Hz	3,700 cfm 104.77 cmm	
	50 Hz	3,700 cfm 104.77 cmm	
Exhaust Connection (Diameter)	18"	45.72 cm	
Compressed Air Connection	1/4" Quick Connection		
Compressed Air Volume	4.25 cfh (0.12 cmh)		
Oven Size	KW	Btu/hr	Kcal/hr
	126	429,900	108,300

### Steam Model

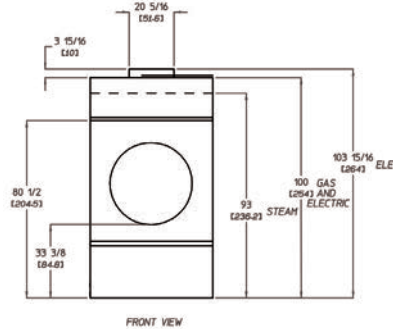
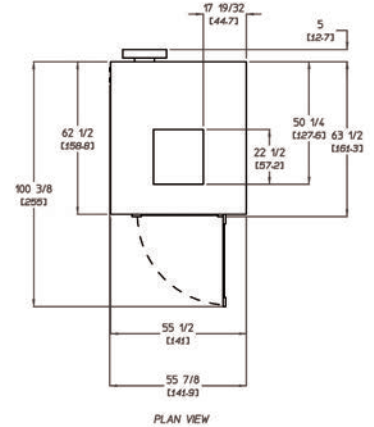
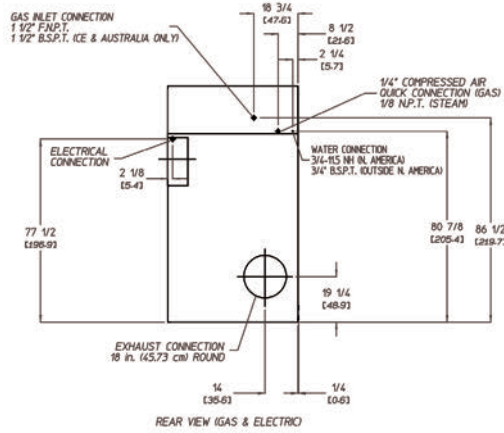
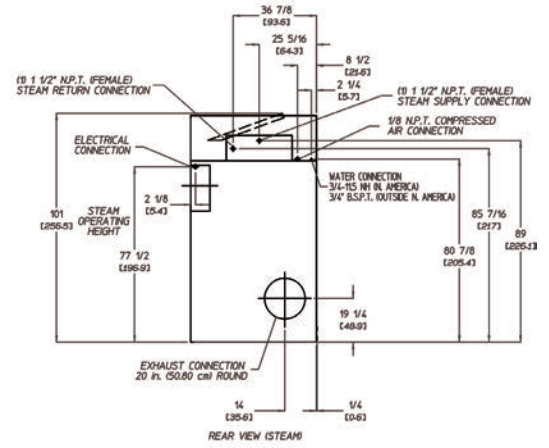
Voltage Available	208-480V 3ø 3,4w 50/60Hz	
Approximate Net Weight	2,259 lb	1,024.67 kg
Approximate Shipping Weight	2,425 lb	1,099.96 kg
Airflow	60 Hz	4,400 cfm 124.59 cmm
	50 Hz	4,400 cfm 124.59 cmm
Steam Consumption	520 lb/hr	236 kg/hr
Operating Steam Pressure	125 psi max (8.62 bar)	
Exhaust Connection (Diameter)	20"	50.80 cm
Compressed Air Connection**	1/8" F.N.P.T.	
Compressed Air Volume**	5.00 cfh (0.14 cmh)	
Boiler HP (Normal Load)	14.5 Bhp	
Standard Supply Connections †	(1) 1-1/2" M.N.P.T.	
Standard Return Connections †	(1) 1-1/2" M.N.P.T.	

Specifications in parentheses are metric equivalents.

**IMPORTANT:** Dryer requires a clean, dry and regulated 80 PSI +/- 10 PSI (5.51 bar +/- 0.68 bar) air supply.

\*\* Air-operated steam damper system requires a clean, dry, and regulated 80 psi +/- 10 psi (5.51 bar +/- 0.69 bar) air supply.

† Optional steam coil connections differ. Refer to installation manual.



Electrical Service Specifications					
Service Voltage	Phase	Wire Service	Approx. Amp Draw		Circuit Breaker
			60 Hz	50 Hz	
<b>126 kW Nominal Electric</b>					
380	3ø	4"	105	176	250
416	3ø	4"	--	191	250
440	3ø	3	152	--	200
460	3ø	3	159	--	200
480	3ø	3	166	--	225
575	3ø	3	102	--	150

Electrical Service Specifications					
Service Voltage	Phase	Wire Service	Approx. Amp Draw		Circuit Breaker
			60 Hz	50 Hz	
<b>GAS &amp; STEAM</b>					
208	3ø	3	29	--	40
220	3ø	3	28	28	40
230	3ø	3	27	32	40
240	3ø	3	27	--	40
380	3ø	3	17	17	30
400	3ø	4"	--	17	30
416	3ø	4"	--	16	20
440	3ø	3	15	--	20
460	3ø	3	14	--	20
480	3ø	3	14	--	20
575	3ø	3	18	--	30